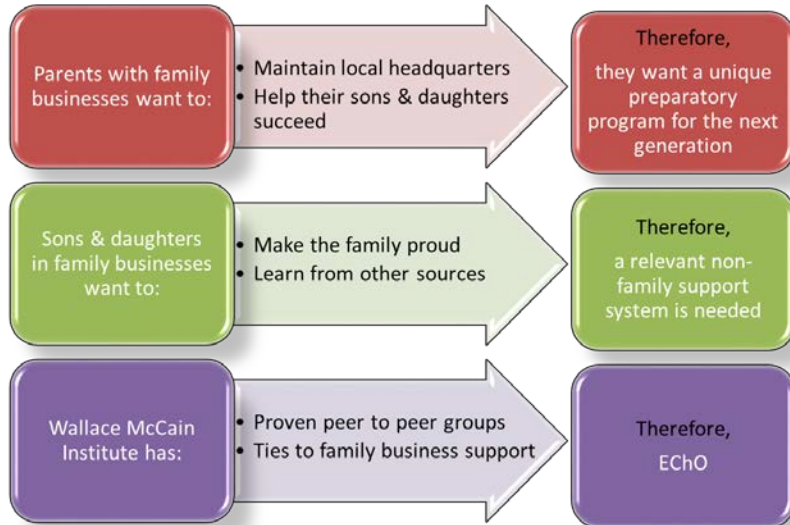


# EChO)))

## Family Business Peer to Peer Group

This region has the highest density of multi-generational family businesses in Canada. It is critical to assure that these businesses will continue to be headquartered in the region. The next generation faces unique challenges as they establish their own identity as part of the family business(es).

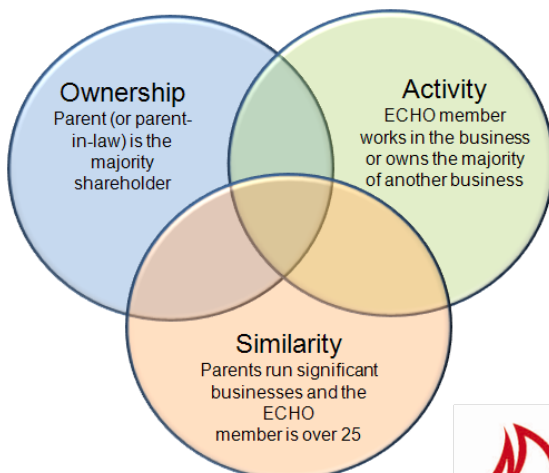
As such, ECHO was established in 2009 by the Wallace McCain Institute. The goal is to provide a network of peer to peer support to the next generation of family business leaders in order to improve succession success. Membership is listed on the WMI website.



- "I don't want this to fail **on my watch.**"
- "I don't know if I am **"the one"** ... he hasn't clearly talked about it."
- "I'm too far into this to ask for **help.** I'm supposed to know."
- "There is a huge expectation that goes with this **last name** in NB."
- "The trouble is, Dad is both a **help and a hindrance.**"



- "I wish that it didn't have to be my father **teaching** me the business."
- "I doubt my abilities because there is always a **safety net** under me."
- "Some days I doubt he will ever **let go** and let me take the reins."
- "Am I **ready** to run this..and what do I do if I'm not?"
- "My spouse and I want to do things differently with **our kids.**"



The WMI starts new ECHO groups based on interest. Once 25 people have expressed a desire to learn more about forming a group, we contact those individuals and set up a formation focus group for all parties at a mutually agreed to time. ECHO1 started in March 2009, ECHO2 started in September 2011 and ECHO3 started in February 2014.

To express your interest in being invited to the next formation meeting, complete the survey at: <https://www.getfeedback.com/r/NdGAfKlb>



**Ralston Armour**

Armour Transportation Systems  
Moncton, NB



**Erin Barrett**

Eigen Innovations Inc  
Woodstock, NB



**Andrée Caissie Savoie**

Imperial Manufacturing  
Group  
Richibucto, NB



**Nick Ganong**

Ganong Bros. Limited  
St. Stephen, NB



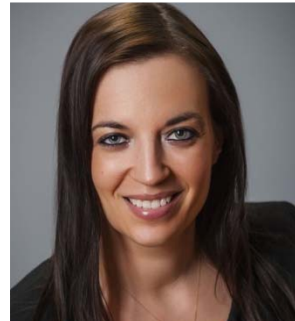
**Caley Montague**

Café Codiac / Down East Coffee  
Moncton, NB



**Giles Oland**

ShoreEast Technologies Inc  
Halifax, NS



**Nathalie Savoie**

Groupe Savoie Inc  
Saint-Quentin, NB



**Carolyn Tozer**

Greenfield Construction Ltd  
Miramichi, NB





WALLACE McCAIN  
INSTITUTE  
BRIDGING ENTREPRENEURIAL LEADERS

# EChO2™

Established in September 2011

Family Business Peer to Peer Group



**Josh Andrews**  
Andrews Hockey  
Charlottetown, PE



**Victoria Armour**  
Armour Transportation Systems  
Moncton, NB



**Matthew Cassidy**  
Coach Atlantic  
Transportation Group  
Charlottetown, PE



**Christian Cyr**  
Château Moncton Hotel &  
Suites



**Nadine Hébert**  
Shoreline Fuels Inc.  
Moncton, NB



**Chris Horne**  
A.E. Horne & Son Ltd  
St. Stephen, NB



**Myles Malley**  
Malley Industries Inc.  
Dieppe, NB



**Justin Somers**  
Towne Mazda  
Miramichi, NB



**Heather Wilson**  
Wilson Insurance Ltd.  
Fredericton, NB



**Matt Wolf**  
Wolfhead Smokers Ltd  
Letang, NB

**Family Business Peer to Peer Group**



**Emily Corey**

Corey Nutrition Company  
Fredericton, NB



**William Crosby**

Crosby Molasses Co. Ltd.  
Saint John, NB



**Mari Fisher**

Cranewood on Main  
Sackville, NB



**Zack Fisher**

Compact Appliances Ltd.  
Sackville, NB



**Marco Gagnon**

GOW Group Inc.  
Grand Falls-Grand Sault, NB



**Colin Kyle**

Industrial Rubber Company Ltd  
Bathurst, NB



**Jocelyne LeBlanc**

Roger LeBlanc & Associates  
Moncton, NB



**Jason F. Mallet**

Nortec Holdings Ltd  
Moncton, NB



**Andrew Moffitt**

Moffitt Dodge Chrysler Ltd  
Oak Bay, NB



**Bobby Norton**

Upper Oxbow Adventures  
Sillikers NB



**Josh Somers**

Towne Ford Sales & Service  
Limited, Miramichi, NB



**Nader Timani**

Fancy Pokket Corporation  
Moncton, NB



**Ali Tregunno**

Halifax Seed Company  
Saint John, NB